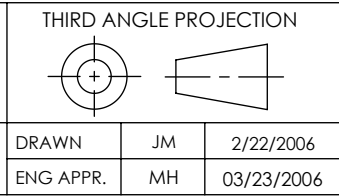


PART NO.	CONDUCTOR MATERIAL	CURRENT
FA13156	COPPER	185 AMPS
FA13156-02	MOLYBDENUM	93 AMPS
FA13156-03	NICKEL	56 AMPS
FA13156-04	304 STN STL	12 AMPS

RATINGS	
VOLTAGE:	12KV DC
CURRENT:	SEE TABLE AT LEFT
TEMPERATURE:	-269°C TO 450°C

PROPRIETARY AND CONFIDENTIAL
 THE INFORMATION CONTAINED IN THIS DRAWING IS THE
 SOLE PROPERTY OF SOLID SEALING TECHNOLOGY. ANY
 REPRODUCTION IN PART OR AS A WHOLE WITHOUT THE WRITTEN
 PERMISSION OF SOLID SEALING TECHNOLOGY IS PROHIBITED.

REV.	APP'D	DATE	SCALE 3:4	DIMENSIONS IN INCHES [mm]
A1	MH	03/23/2006	MPST0021-0ST	



TITLE:
FOUR 12KV FEEDTHROUGHS

PART NO. (SEE TABLE) REV. A

