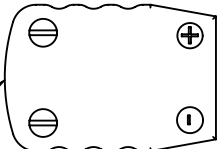


GLASS FILLED NYLON PLUGS INCLUDED



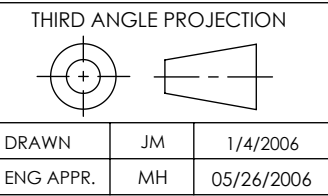
PART NO.	CONDUCTOR MATERIAL	T/C TYPE
FA13794	CHROMEL / ALUMEL	K
FA13794-02	IRON / CONSTANTAN	J
FA13794-03	TUNGSTEN / RHENIUM*	C
FA13794-04	CHROMEL / CONSTANTAN	E

*TYPE C USES COMPENSATING WIRE
MAXIMUM JUNCTION TEMPERATURE 250°C

RATINGS	
CONDUCTOR MATERIAL:	SEE TABLE AT LEFT
T/C TYPE:	SEE TABLE AT LEFT
TEMPERATURE WITHOUT PLUG:	-269°C TO 450°C
TEMPERATURE WITH PLUG:	-29°C TO 218°C

PROPRIETARY AND CONFIDENTIAL
THE INFORMATION CONTAINED IN THIS DRAWING IS THE SOLE PROPERTY OF SOLID SEALING TECHNOLOGY. ANY REPRODUCTION IN PART OR AS A WHOLE WITHOUT THE WRITTEN PERMISSION OF SOLID SEALING TECHNOLOGY IS PROHIBITED.

REV.	APP'D	DATE	SCALE 1:1	DIMENSIONS IN INCHES [mm]
A1	MH	05/26/2006	MPDP0030-ST	



TITLE: FIVE PAIR T/C SPADE TYPE FEEDTHROUGH

PART NO. (SEE TABLE) REV. A

