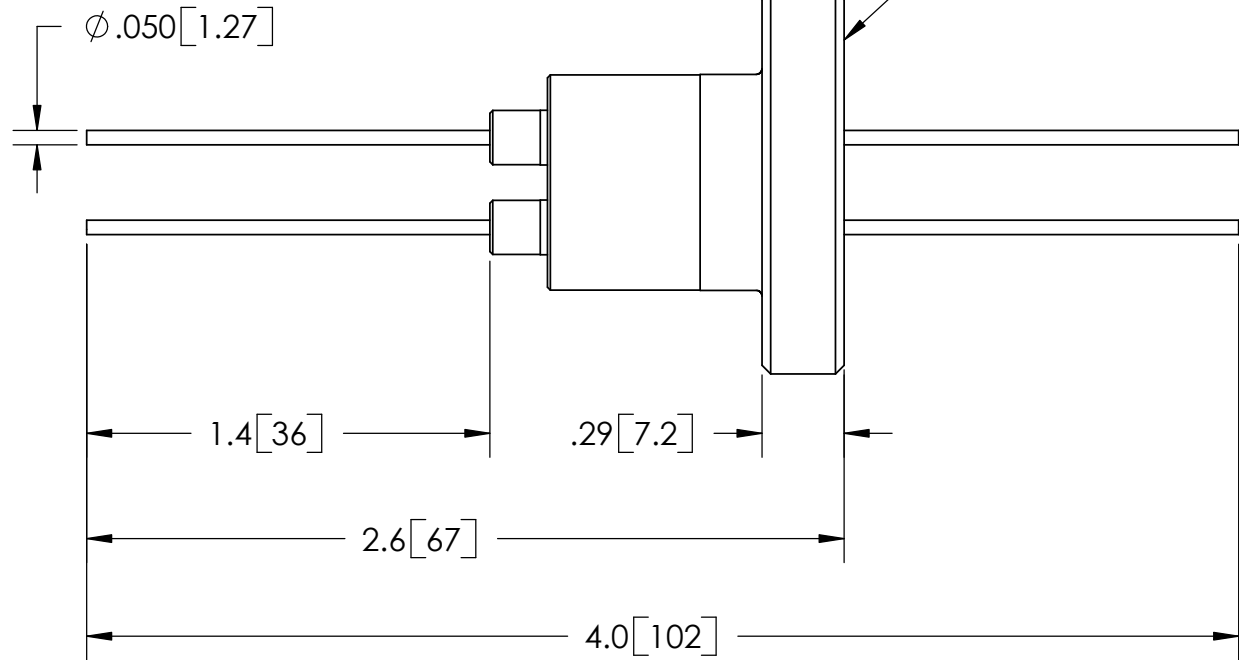


.31 [7.9]



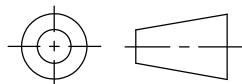
PART NO.	CONDUCTOR MATERIAL	CURRENT
FA11644	COPPER	27 AMPS
FA11644-02	MOLYBDENUM	13.5 AMPS
FA11644-03	NICKEL	8.2 AMPS
FA11644-04	304 STN STL	1.8 AMPS

RATINGS	
VOLTAGE:	3KV DC
CURRENT:	SEE TABLE AT LEFT
TEMPERATURE:	-269°C TO 450°C

PROPRIETARY AND CONFIDENTIAL

THE INFORMATION CONTAINED IN THIS DRAWING IS THE SOLE PROPERTY OF SOLID SEALING TECHNOLOGY. ANY REPRODUCTION IN PART OR AS A WHOLE WITHOUT THE WRITTEN PERMISSION OF SOLID SEALING TECHNOLOGY IS PROHIBITED.

THIRD ANGLE PROJECTION



TITLE:

TWO 3KV FEEDTHROUGHS



SOLID SEALING TECHNOLOGY, INC.

REV.	APP'D	DATE	SCALE 3:2	DIMENSIONS IN INCHES [mm]	DRAWN	JM	1/12/2006
A1	MH	03/21/2006	MPCL0016-0ST		ENG APPR.	MH	03/21/2006

PART NO. (SEE TABLE) REV. A

SALES DWG NO. FA11644SL REV. A1