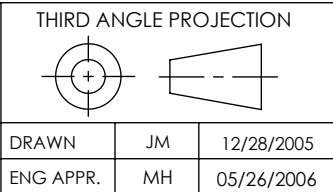


CONDUCTOR TABLE					
PART NO.	REMARKS	CONDUCTOR MATERIAL	CURRENT	VOLTAGE	AIR SIDE PLUG
FA11683	POWER	ALL ALUMEL	4.8 AMPS	700V DC	NO
KT11683	POWER	ALL ALUMEL	4.8 AMPS	700V DC	YES
FA11683-02	T/C	CHROMEL / ALUMEL	N/A	N/A	NO
KT11683-02	T/C	CHROMEL / ALUMEL	N/A	N/A	YES

RATINGS	
CONDUCTOR MATERIAL:	SEE TABLE AT LEFT
CURRENT:	SEE TABLE AT LEFT
VOLTAGE:	SEE TABLE AT LEFT
TEMPERATURE WITHOUT PLUG:	-269°C TO 450°C
TEMPERATURE WITH PLUG:	-55°C TO 125°C

PROPRIETARY AND CONFIDENTIAL
 THE INFORMATION CONTAINED IN THIS DRAWING IS THE SOLE PROPERTY OF SOLID SEALING TECHNOLOGY. ANY REPRODUCTION IN PART OR AS A WHOLE WITHOUT THE WRITTEN PERMISSION OF SOLID SEALING TECHNOLOGY IS PROHIBITED.

REV.	APP'D	DATE	SCALE 1:1	DIMENSIONS IN INCHES [mm]
B1	MH	05/26/2006	MPDP0012-0ST	



TITLE: SIX PIN CONNECTOR

PART NO. (SEE TABLE) REV. B

